

MAPPING CHARTING & RECONNAISSANCE STANDARD PLOTTING FORM

U.S. AIR FORCE S-100372 A

ORIGIN & SORTIE TW-18

DATE (D M Y) 14 APR 56

O.P. FILE NO. 69°N 86°87'E 567R

FOCAL LENGTH

TIME (G M Y)

OVERLAY FILE NO.

ALTIMETER (SI)

COUNTRY (SI)

U.S.S.R.

GED REF.

SCALE (GRAPHIC) 1:65000

QUALITY

EXCELLENT GOOD FAIR POOR

SECRET

CONFIDENTIAL

EXP. THIS DC. SO VI 250-270, VT 165-175.

SNOW COVER (EXP. & %)

ALL EXP. 100%

UNCLASSIFIED

RY 245-260, RT 158-163

ICE COVER (EXP. & %)

HAZE

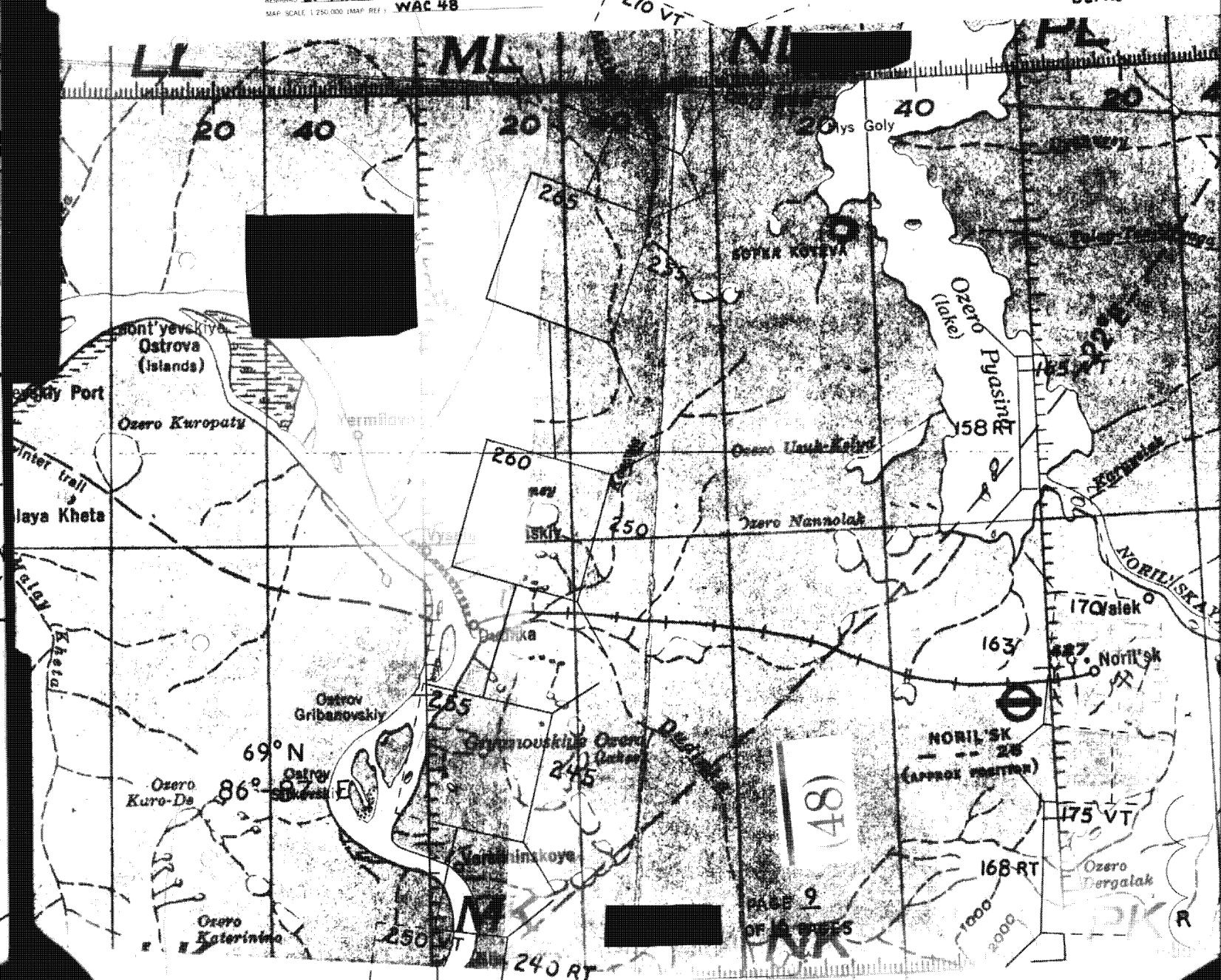
TOTAL EXP. VI 1-434, RT 412

REMARKS LT-MALFUNCTION FD-UNPLOTTABLE

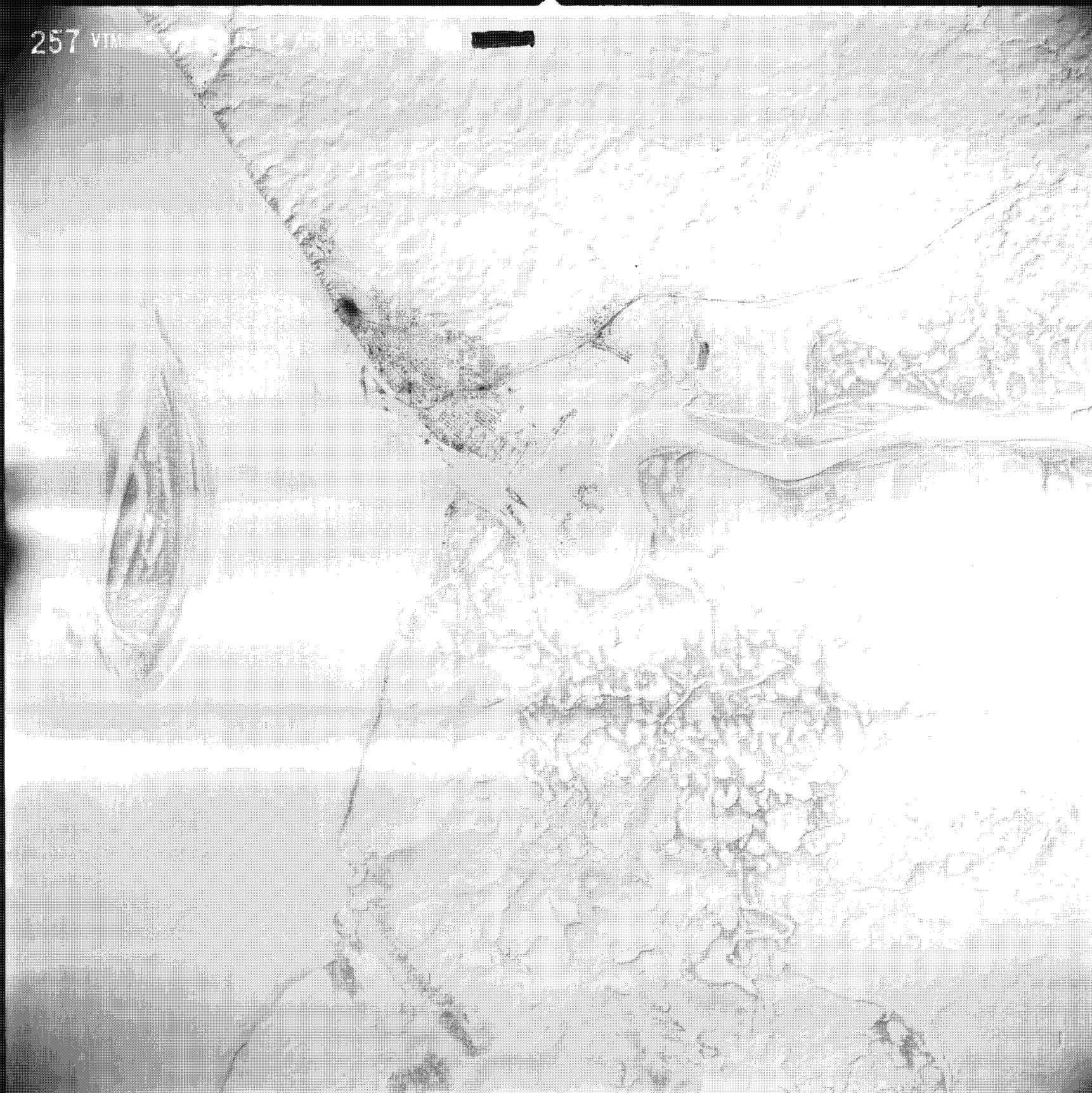
MAP SCALE 1:250,000 (IMAF REF.) WAC 48

ADDITIONAL SECURITY INFORMATION

SENSITIVE INTELL. PREPARED BY D/I HQ SAC 11 JULY 56 HUDDLE BEMIS



PAGE 9 OF 9 SHEETS



257 VIM [unclear] 18 14 1955 [unclear]

UNCLASSIFIED

Project Homerun Mission on 14 April 1956
RB-47 Mission 18 out of Thule, Greenland
Pilots Unknown
City of Dudinka, USSR (Siberia)

162 LSV

18, 14 APR 55 36'



Project Home Run
Mission 18

UNCLASSIFIED

City of Dudinka, USSR

14 April 1956

164 LSV

18. 14 APR 55 36"



Project Home Run
Mission 18
UNCLASSIFIED
14 April 1956
City of Dudinka, USSR